



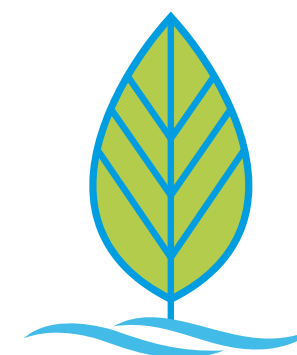
INDALO®

WATER AND STONE

WATER AND STONE



We have improved our pools by making them
more sustainable,
more environmentally-friendly,
healthier,
more landscape-friendly.



INDALO PISCINE

We have been designing and building pools since 1997.

Our aim is to create a union between water, natural stone and the surrounding environment to offer the best solutions in terms of aesthetics, landscape and functionality. All this, with an eye for detail and the use of cutting-edge technology to guarantee real moments of relaxation and mental-physical well-being.

Plumbing, engineering, electrical expertise. Twenty-five years in the industry have given us the experience necessary to follow each stage of the project with professionalism and expertise, from inspection to construction, through to maintenance and remote control. The knowledge of landscape architecture is seamlessly combined with the artisan “know-how” of working with stone and the ability to install the latest technologies for the perfect operation of the pool, creating environments that are beautiful to look at and to experience.



Managed by a team of technicians and specialists. Customised projects, design solutions and the highest quality raw materials to ensure safety and durability. Throughout the years, we have consolidated our partnership with professionals from various fields, including architects, landscape designers and engineers, in order to put their expertise at the service of our customers and to offer a comprehensive service that establishes our company as the sole contact for the entire project. All this provides the customer with an additional guarantee and, above all, significant time and cost savings.

We have built over three hundred pools lined with stone.

Our strength? The ability to fully customise projects. Every environment, every building and every customer has their own special characteristics and needs, requiring pools with customised features, dimensions, materials, colours and technologies. From swimming pools to spa pools, from pools built in prestigious historical and architectural settings to pools set in bucolic locations: our priority is to always offer unique and unrepeatable solutions.

“*For a child, playing is growing.
I am still having fun.*”

*Claudio Petrini
(Technical Sales Manager at Indalo Piscine)*

“*A new discovery every day.*”

*Olga Barbosa Alonso
(Indalo Piscine director)*

LIGHT-BLUE COURTYARD

10

Carovigno (Br)
A perfect mix of nature, tradition, landscape and architecture.

NATURAL OASIS

16

Tavarnelle Val di Pesa (Fi)
An infinity pool that combines aesthetics, quality materials and technology.

TUSCAN HILLS

22

Torrita (Si)
Nestled in the Tuscan hills, a pool designed for swimming and retaining the heat.

BODY AND MIND

28

Cologne (Bs)
Comfort and technology perfectly integrated and contextualised in a historic setting.

TUSCAN INFINITY

34

San Casciano dei Bagni (Si)
A perfect shape for swimming surrounded by greenery, with the gentle sound of flowing water.

DEEP BLUE

40

Sant'Egidio (Pg)
Well-being and relaxation: a pool set in the heart of the green Umbrian hills.

NOBLE ATMOSPHERES

44

San Miniato (Pi)
All the well-being provided by a heated, thermal pool with hydromassage in the cellar of an early 19th-century aristocratic palace.

PERFECT SHAPES

50

Val d'Ambra (Ar)
An interplay of geometric shapes to offer extension and dynamism even in a small space.

EMERALD GREEN

56

San Casciano dei Bagni (Si)
Inspired by natural thermal baths, a rational and simple pool that enhances the purity of shape.

HEAVEN ON EARTH

62

Corbara (Tr)
A bucolic landscape houses a large pool designed as the courtyard of an elegant portico.

BLUE ECOLOGY

72

Pratovecchio Stia (Ar)
Meticulous technical and aesthetic choices for a highly valuable project.

OLIVE TREES AND VINEYARDS

80

Trequanda (Si)
Total respect for the environment makes the pool perfectly compatible with the extremely valuable landscape of the area.

FRESH AND SALT WATER

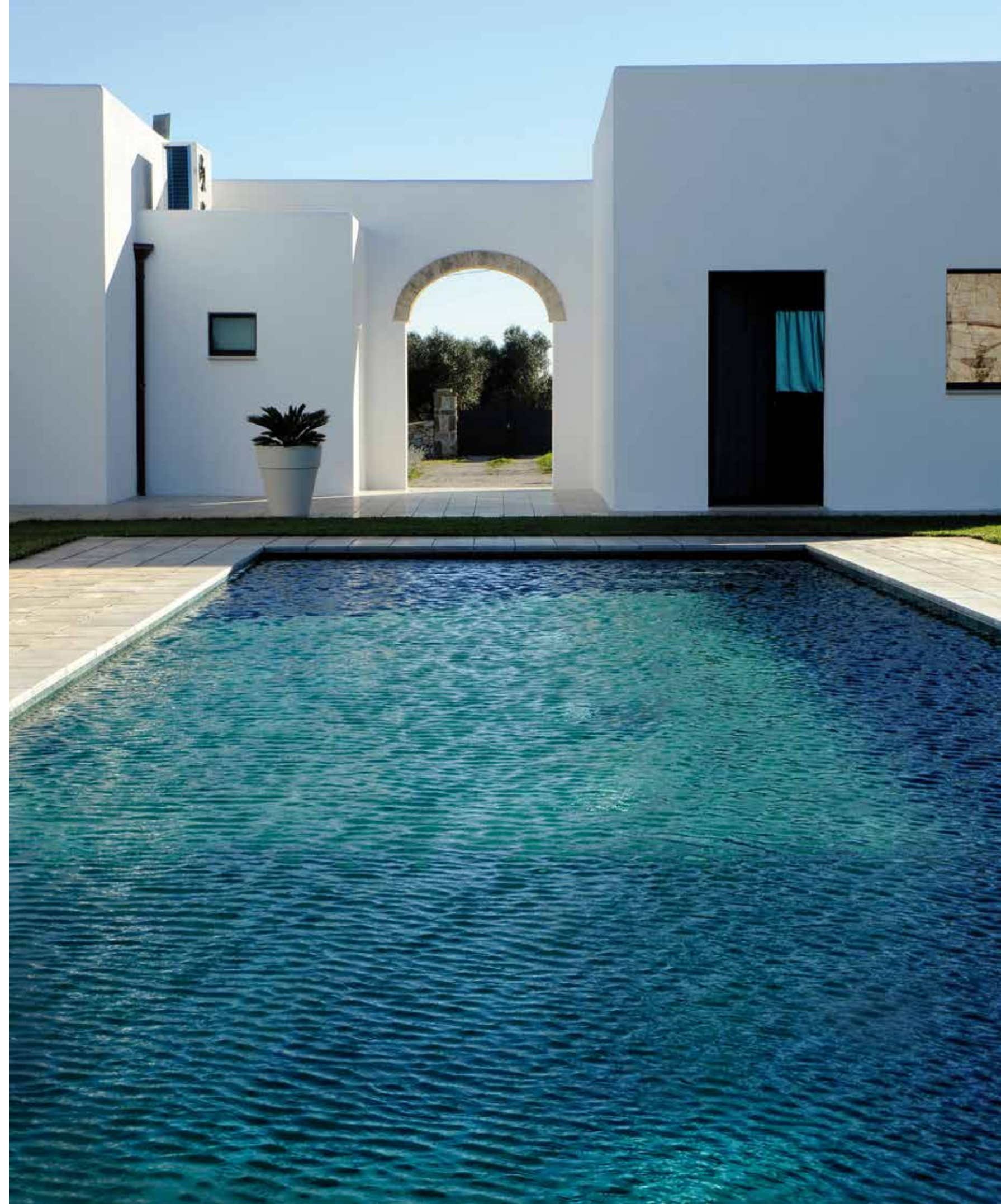
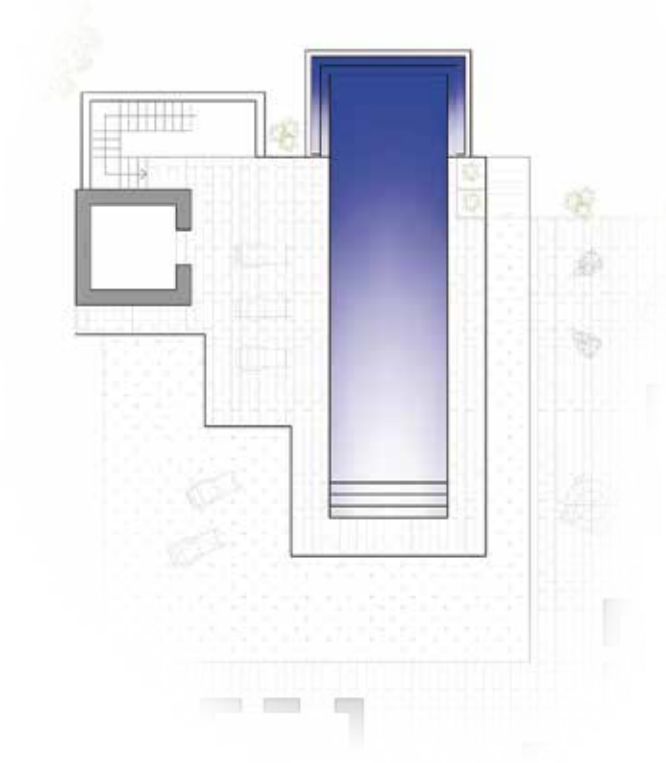
92

Roccamare (Gr)
A slice of heaven with a pool designed to create an unbreakable bond between pine forest and sea.

Light-blue courtyard

CAROVIGNO. Nature, tradition, landscape and architecture come together in the Alto Salento region, in a unique setting that is becoming increasingly popular among private and foreign investors. This is where Villa Cinzia is located, a private property surrounded by centuries-old olive trees and red earth, all framed by typical dry-stone walls. The designers, together with the customers, decided to take on the challenge to recover the old construction techniques (such as the exposed tuff vaults) and integrate them with today's living requirements. The idea behind the project was to create a courtyard, between the two sides of the "L" shape of the building, with an antique feel, with local stone flooring and embellished by a pool which, thanks to its essential and simple design, fits perfectly into the architectural context and landscape.

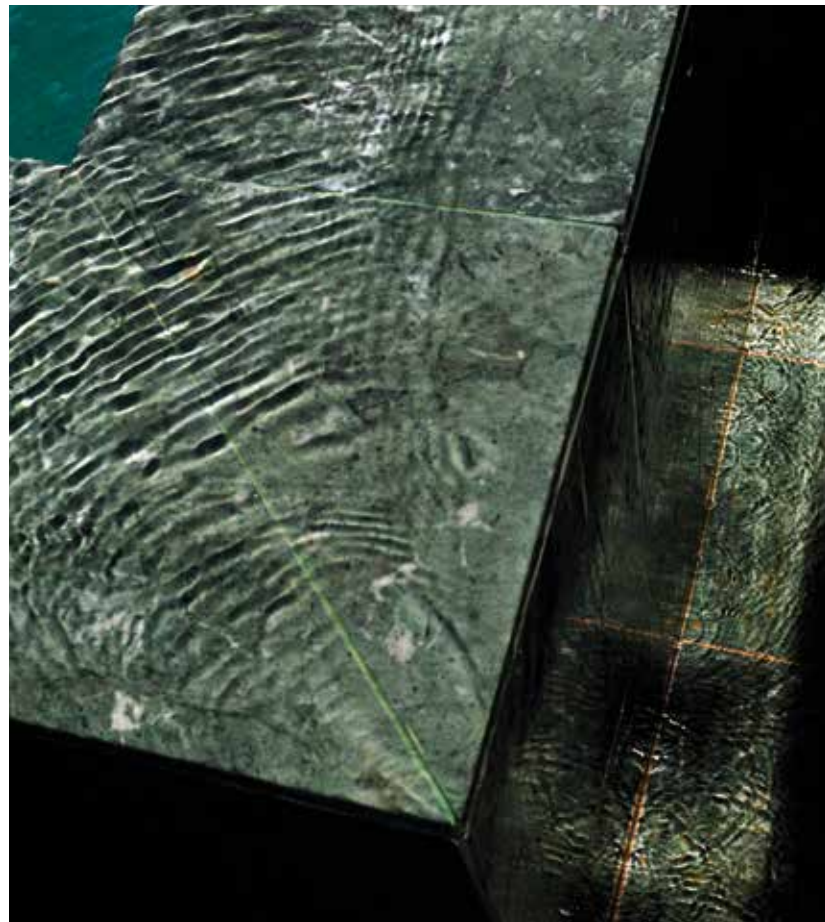
Made entirely of reinforced concrete with dimensions of 15x4 m and a depth ranging from 1.20 m to 2.00 m, the pool has been designed with cutting-edge technical solutions aimed at taking care of every aspect to maximise comfort and functionality: from the insulation of the walls and the base slab with cellular glass to the use of the best materials on the market for waterproofing.





Particular attention was paid to the internal lining, starting with a 20 mm thick “Crocodile Green Marble” of Indian origin which, when properly processed and laid, gives the water a unique colour thanks to its natural veining.

Access to the pool consists of steps on the shorter side, due to its features and shape, and offers owners and guests the possibility of sitting in the pool more or less immersed.



The infinity edge was created by cleverly using a natural difference in height between the short sides, the one at the pool entrance and the one on the opposite side, thus creating a suggestive element that embellishes the entire architectural context.





The filtering system is designed to be as environmentally friendly and water-efficient as possible. This process is carried out through a 35 m³/h filter with an output flow rate of 30 m/l/s, specially built to house the filter bed with layers of various glass particles (Activated Filter Media) which are lighter than silica sand and allow water savings of 30% compared to a normal sand filter. The high-performance pump, the automatic salt dosing system with pH control and dosing, and the LED lighting ensure that the customer's need for reduced consumption and minimal chemical use is met.

CAROVIGNO - BRINDISI - PUGLIA
CONTRACTOR: INDALO PISCINE SRL
CONSTRUCTION COMPANY: APULIA EXCLUSIVE HOUSES SRL
DESIGNER AND WORKS MANAGER: Camposeo Antonello Surveyor
MUNICIPALITY: CAROVIGNO (BR)
SHAPE: RECTANGULAR
AREA: 60 m²
DIMENSIONS: 15 x 4 m
DEPTH: 1.20 - 2 m
FILTRATION SYSTEM: single - HFS series
30 m³/h - speed 30 m/l/s - filter bed 
DISINFECTION: pH SALT SYSTEM
SYSTEM: WATERFALL INFINITY EDGE
INTERNAL LINING: CROCODILE GREEN MARBLE - INDIA

Natural oasis

TAVARNELLE VAL DI PESA. The pool was built at the end of a garden. This has allowed the designer to outline and enclose the garden and, at the same time, offer an infinity pool overlooking the hill. The small beach at the access area of the mirror of water hides the entrance and allows guests to rest after swimming.





Swimming and retaining the heat: this double request from the customer had been taken into account when designing this pool. The pool was thus created with a long, narrow shape suitable for swimming, while maintaining the temperature of the water accumulated during the day without using covers. Cellular glass, normally a waste material, in the form of 4/7 pieces was used and distributed under the base slab and on the bearing walls, thus creating a sort of insulation. This element has also excellent draining and thermal insulating properties able to fully meet the customer's requests with a double advantage: lower cost compared to traditional covering and conservation of the aesthetics and elegance of the prestigious finishes.

TAVARNELLE VAL DI PESA - FLORENCE - TUSCANY

CONTRACTOR: INDALO PISCINE SRL

CONSTRUCTION COMPANY: LORINI

DESIGNER AND WORKS MANAGER: Brunelli A. Surveyor

COMUNE: BARBERINO TAVARNELLE (FI)

SHAPE: RECTANGULAR

AREA: 51 m²

DIMENSIONS: 17 x 3 m

DEPTH: 1.50 m

FILTRATION SYSTEM: single - HFS series 30 m³/h - filter bed



DISINFECTION: pH SALT SYSTEM

SYSTEM: WATERFALL INFINITY EDGE

RIVESTIMENTO INTERNO: TRAVERTINE



Aesthetics, high-quality materials and technology come together in an infinity pool that not only satisfies the customer's requests, but also merges perfectly with the surrounding landscape.



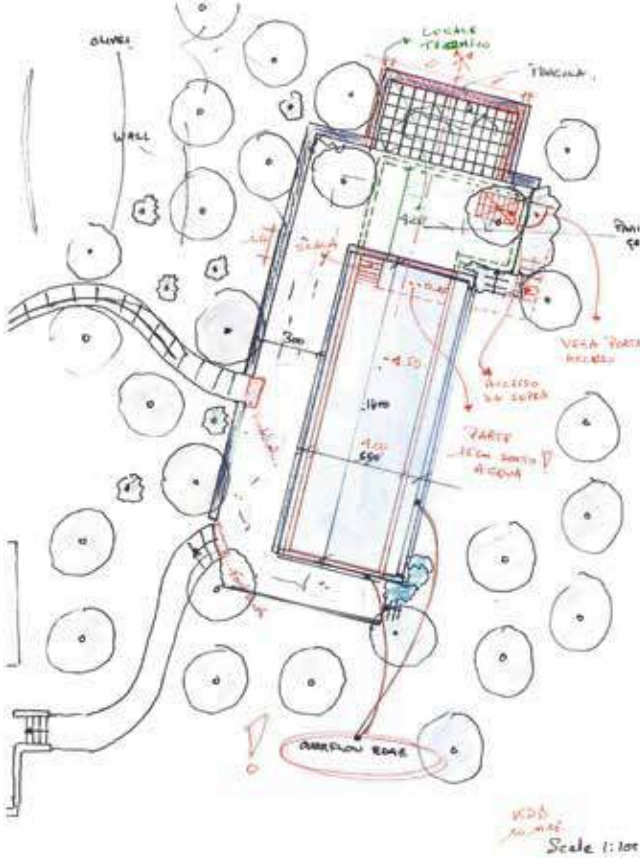
An elegant access to the pool via a staircase sloping gently towards the bottom allows you to relax and regenerate after a swim.

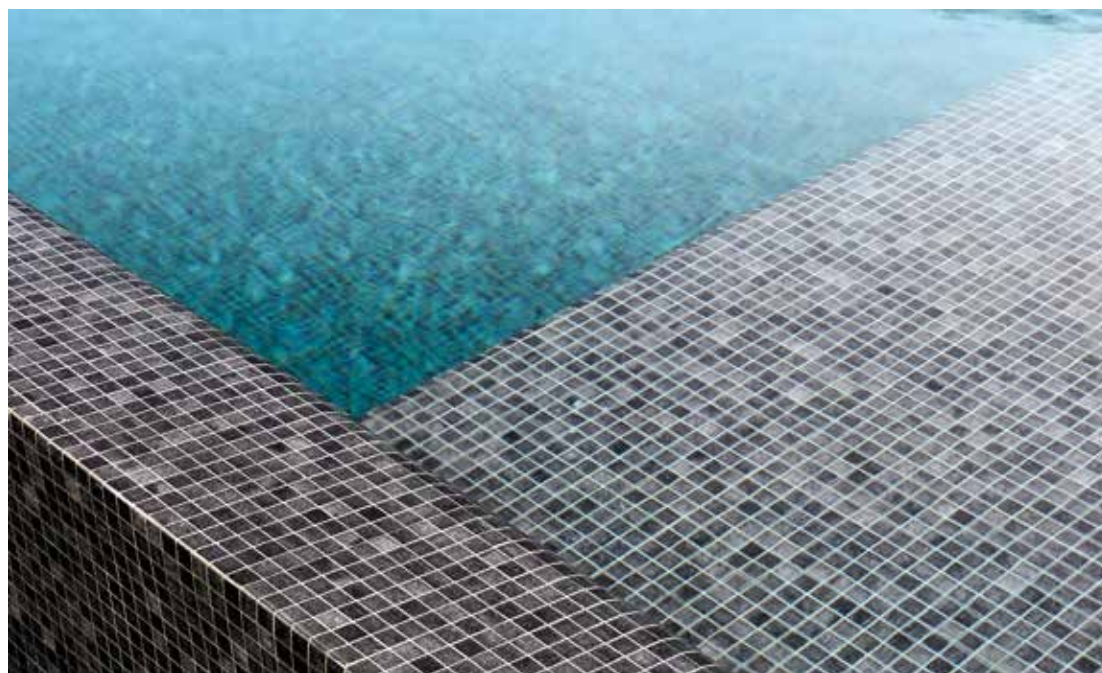


The pool is designed and built with customised solutions aimed at integrating the best available techniques in water treatment and filtration.



TORRITA. Nestled in the Tuscan hills between Valdichiana and Val D'Orcia, this beautiful pool with a long, narrow shape is perfect for swimming. The picturesque location offers a spectacular view of the surrounding countryside, which explains the infinity edge on two sides, long and short, downstream from the garden, in order to enjoy the widest panorama possible and to maintain the typical dry stone walls that distinguish the place. The design was based on the use of two materials, "Nuvolato" travertine with an open-pore finish for the poolside, and a Mocha-coloured "Mosaic", creating a special chromatic contrast between the light colour of the travertine and the dark colour of the mosaic. Flooring on the longest side is 2.80 m, while it widens on the short side of the pool entrance to create a relaxation area that includes a comfortable table and a shaded pergola. The 12x3 m pool has a variable height of 120 to 180 cm.





The structure is made of reinforced concrete on pile foundations, which are necessary due to the nature of the soil. In order to meet the customer's request to extend the period of use of the pool as much as possible, solar panels were installed and a system was provided to convey excess hot water from the house to the pool. The pool has also been insulated with a 30 cm layer of cellular glass on all underground surfaces. This allows the temperature of the water to be maintained during the day without having to use a cover, in an eco-friendly way that avoids waste and respects the surrounding landscape.

The pool features a filtering system with two 20 m³/h filters and an AFM glass-based filter bed with three different particle sizes and a height of 1,700 mm. The two Speck Profy pumps with permanent magnet motors with variable speed control the smooth flow of water out of the jets. The use of glass mosaic lining in the pool requires careful monitoring of the water quality. As far as oxidation is concerned, this pool is equipped with an automatic electrolysis-based and pH system with a static mixer for the cavitation of water, used both for flocculation and coagulation, for mechanical disinfection and as a barrier against bacteria. The lighting is provided by four warm light 12x3 W Vitalight LED spotlights with a diameter of 14.6 mm that illuminate the pool evenly.

TORRITA - SIENA - TUSCANY
CONSTRUCTION COMPANY: ROSSI E SERAFINI
DESIGNER AND WORKS MANAGER: Alessandro Piccardi, Architect
MUNICIPALITY: TORRITA DI SIENA (SI)
SHAPE: RECTANGULAR
AREA: 56 m²
DIMENSIONS: 14 x 4 m
DEPTH: 1.50 m
FILTRATION SYSTEM: double - AFM series 20 m³/h - filter bed
DISINFECTION: pH SALT SYSTEM
SYSTEM: WATERFALL INFINITY EDGE
INTERNAL LINING: BISAZZA GLASS MOSAIC



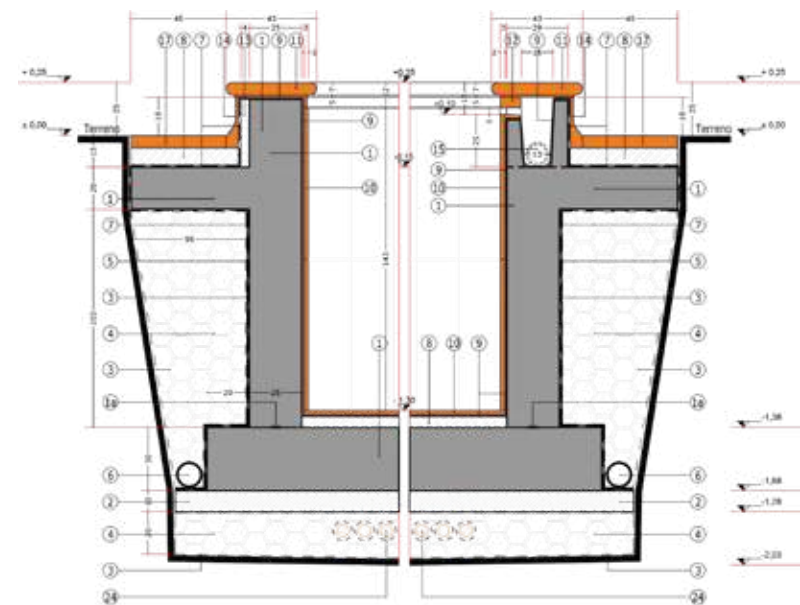
Body and mind

COLOGNE. The pool is on the property of a single house and is located in an area subject to landscape restrictions.

The intervention was carried out in the context of a more structured programme of architectural and functional recovery, which involved the entire building complex, consisting of a section of an urban block with an inner courtyard garden. The project for the recovery and enhancement of the garden included the pool, which was planned in full compliance with the general objectives of urban structure preservation set out in the planning rules. The pool is a response to a precise, twofold need of the property: designing a decorative solution that integrates as seamlessly as possible and without formal or material contrasts in the existing historical architectural context, and at the same time ensuring the functionality and usability of this environment through all the possible ancillary functions (lighting, hydromassage, heating, etc.). All this, of course, without the inevitable installation and technological components being too visible or noticeable. The main challenge was to achieve a synthesis of classic aesthetics and contemporary functionality, of different shapes and functions. The position and the particular size chosen have turned the pool into the main element of the courtyard garden. The special shape, the form of the cross section and the height of the edge of the pool have thus been designed to become furnishing accessories, through the inclusion of a continuous seat that allows the outdoor area to be used even after summer.

The particular L-shaped architectural articulation of the buildings allows the pool to be appreciated in all its dimensions and details, both from the garden and from above. This meant paying particular attention to the study of details, the access, the selection and treatment of materials and their shape, the blending of the infinity edge, the concealing of drains and bottom jets, the hydromassage, buttons, wells, installations and, in general, the various solutions provided.

The pool and its internal elements (bench and steps) are made of reinforced concrete and are internally waterproofed. The only concealed infinity edge located on a long side allows for continuous supply for normal recovery needs due to evaporation or backwashing of the filters, as it is also connected to the filtering system located inside the existing underground compartment that is made directly accessible at the side portico. The “balance tank” for collecting the water overflowing from the infinity edge and all the technological equipment for the correct operation of the pool were installed in this underground compartment.

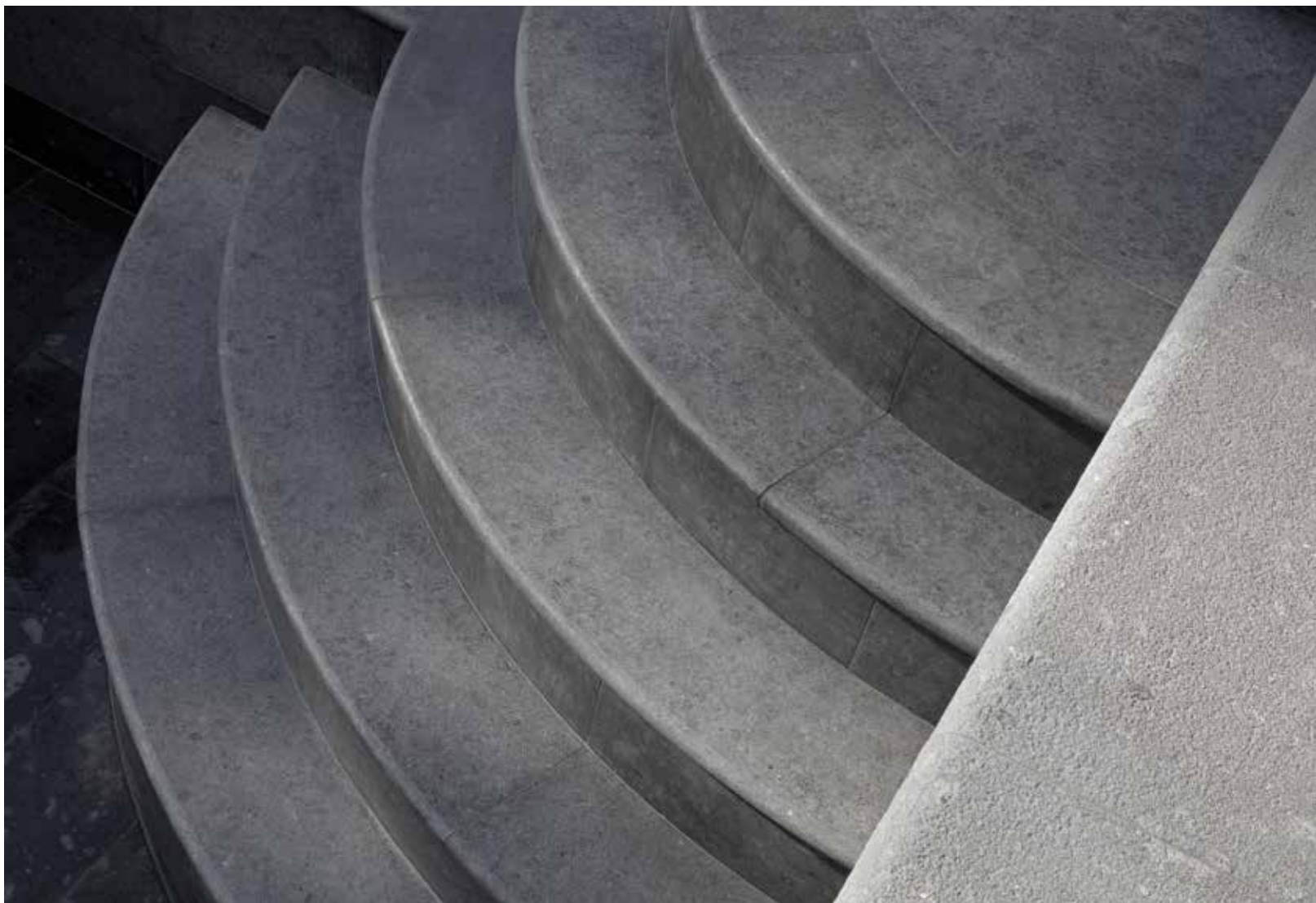







The lining, the edge and the various finishes, including the exterior, are made of Grey Lavic Trachyte natural stone, using epoxy putty and a different treatment for the mainly dry (antiqued) or wet (stuccoed and polished) parts.

This natural material has been used to maintain the mechanical properties that guarantee aesthetics, durability and strength and preserve the naturally ancient appearance of the building and its resemblance to the local grey sandstone. The water also takes on a beautiful natural dark green shade, in line with the surrounding architectural complex.



The pool can be accessed via a semi-circular stone-lined corner staircase, which is built-in and completely underwater.

Lastly, detailed stone features conceal the technological components such as lighting, bottom sockets or jets that are necessary for the operation of the system, while the metal components, where visible, are minimised and treated to convey a sense of antiquity, thus respecting the main purpose of naturalising and contextualising the project.

COLOGNE - BRESCIA - LOMBARDY
CONTRACTOR: TUTTO CASA SRL TRENZANO BS
DESIGNER AND WORKS MANAGER: Livio Farina, Architect
MUNICIPALITY: COLOGNE (BS)
SHAPE: RECTANGULAR WITH CONCEALED INFINITY EDGE ON ONE SIDE
AREA: 36,80 m²
DIMENSIONS: 7,45 X 4,94 m
DEPTH: 1.50 m
FILTRATION SYSTEM: single - HFS 720 series - filter bed 
DISINFECTION: pH SALT SYSTEM
SYSTEM: CONCEALED INFINITY EDGE
INTERNAL LINING: PEPPERINO GREY NATURAL STONE

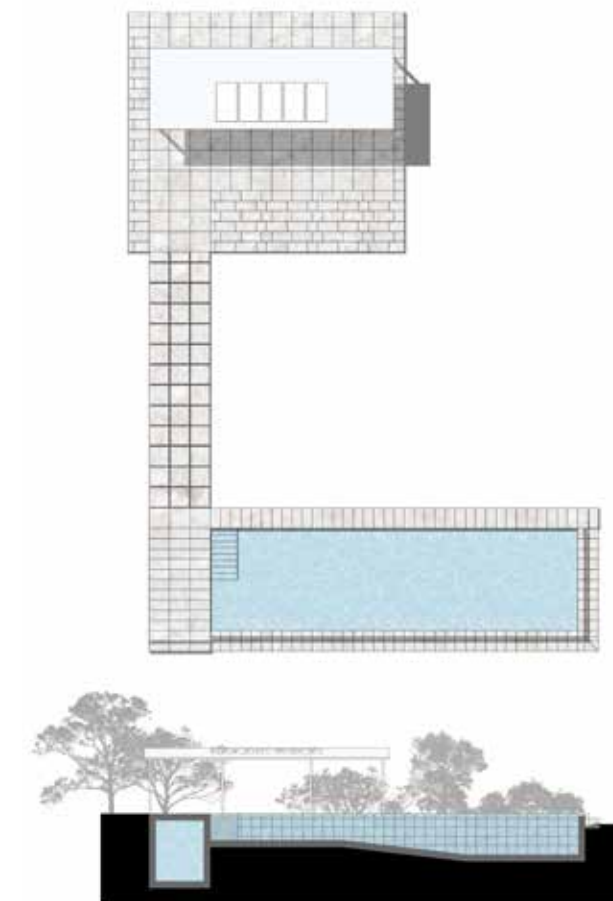
Tuscan infinity

SAN CASCIANO DEI BAGNI An elegant pool nestled in the Tuscan countryside. This particular location offers a spectacular view of the surrounding countryside, which explains the L-shaped infinity edge placed on the two sides as to make the most of the view, while the long, narrow shape is perfect for swimming. The design decision consisted in using “Nuvolato” travertine as the only material for the lining and external flooring to achieve a solution that blends perfectly with the landscape. The 18x5 m pool has a variable height of 130 to 200 cm. On the longest side, the flooring is 1 m wide, while on the short side it widens to 3 m to create a solarium offering access to the pool via marble steps. This stone is characterised by a wide range of colours from beige to hazelnut, from grey and shades of gold to an intense turquoise colour.

The entire project was customised and carefully designed down to the smallest detail, with the travertine itself being laid based on its natural characteristics: with regard to the horizontal surfaces, the stone was vein-cut, and for the vertical surfaces it was cross-cut, with a variety of finishes depending on the different purposes. The marble in the internal lining was polished, stuccoed and brushed for easy cleaning, while the travertine in the external coating was sandblasted and not stuccoed to achieve a softer, more natural open-pore surface finish that is also pleasant to the touch. The finish of the external wall of the infinity edges is known as “striping” and consists of several cuts, with the remaining ridges being hand-finished.

The effect is unique and makes the waterfall vibrant and irregular, reminiscent of the gentle sound of water flowing over cobblestone. Lastly, the external flooring has been reduced to a minimum in order to achieve the utmost harmony with the landscape and to offer a material work that plays a distinctive role in its surroundings.

The structure is made of reinforced concrete on pile foundations, which are necessary due to the particular nature of the soil. The client's request was to extend the period of use of the pool as much as possible, therefore, solar panels were installed and a system was provided to convey excess hot water from the house to the pool. The pool has also been insulated with a 30 cm layer of cellular glass on all underground surfaces, thus allowing the temperature of the water to be maintained during the day without having to use of a cover, in an ecological and environmentally friendly way.

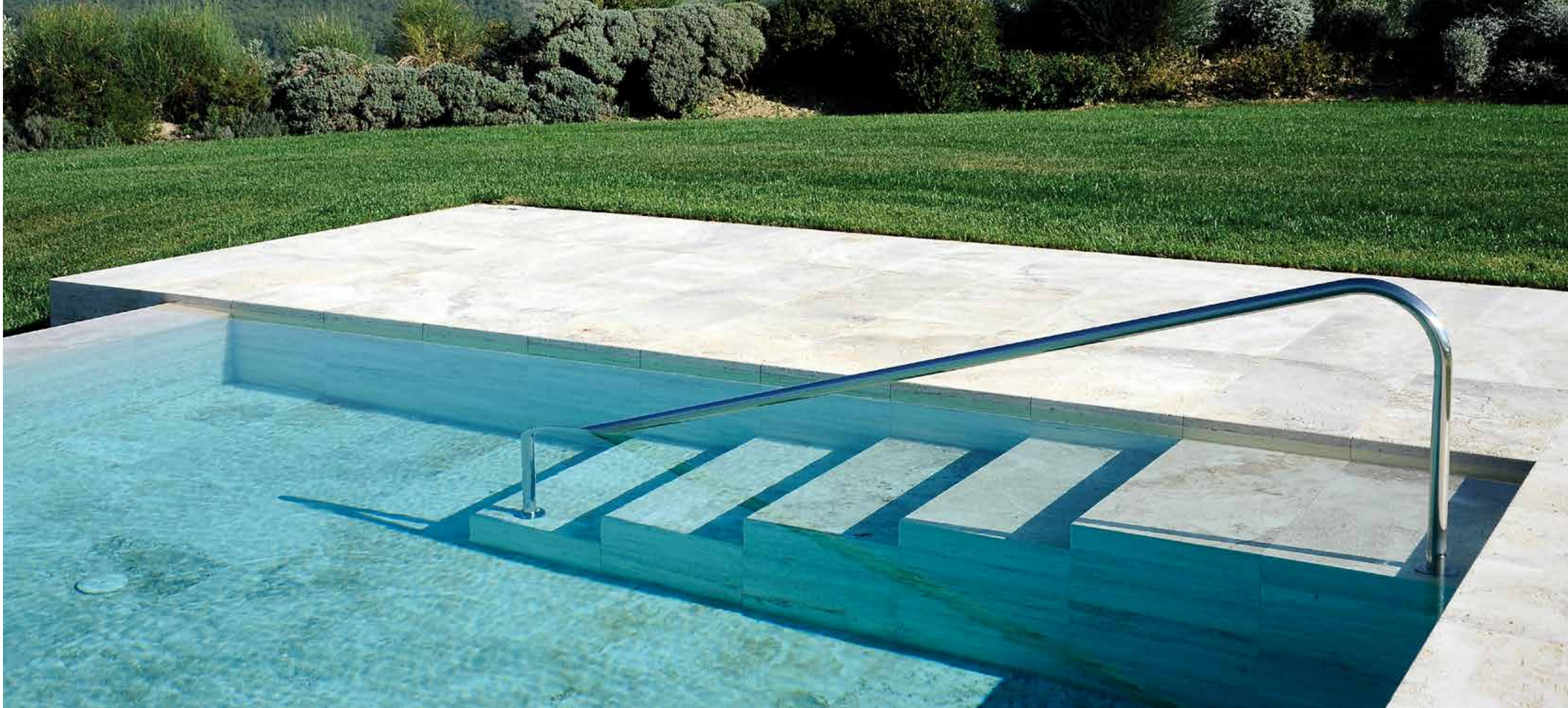




The pool features a 40 m³/h filtering system and an AFM glass-based filter bed with three different particle sizes and a height of 1,500 mm. The two Speck Badu 90 25 m³/h three-phase pumps control the smooth flow of water out of the jets. Using travertine lining in the pool requires careful monitoring of the water quality.



Oxidation in this tank is carried out by an automatic electrolysis and pH system with a static mixer for the cavitation of water -ZPM- which controls both flocculation and coagulation, as well as mechanical disinfection and bacteria prevention. The lighting is provided by six warm light 12x3 W Vitalight LED spotlights with a diameter of 14.6 mm that illuminate the pool evenly.



SAN CASCIANO DEI BAGNI - SIENA - TOSCANY

CONTRACTOR: INDALO PISCINE SRL

DESIGNER AND WORKS MANAGER: Alessandro Giulianelli Studio

MUNICIPALITY: SAN CASCIANO DEI BAGNI (SI)

SHAPE: RECTANGULAR

AREA: 90 m²

DIMENSIONS: 18 x 5 m

DEPTH: 1,30 - 2 m

FILTRATION SYSTEM: double - AFM series 20 m³/h - filter bed

DISINFECTION: pH SALT SYSTEM

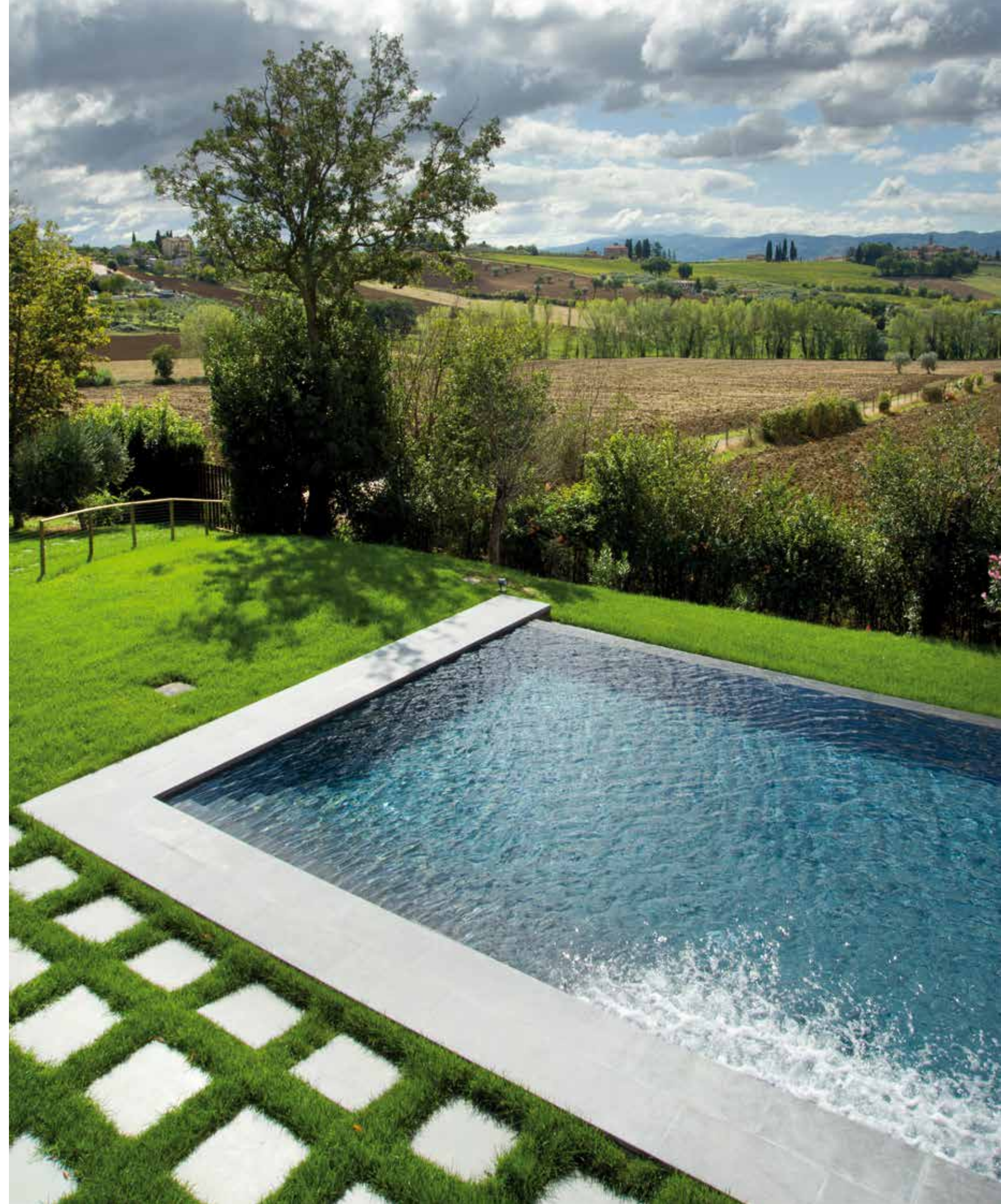
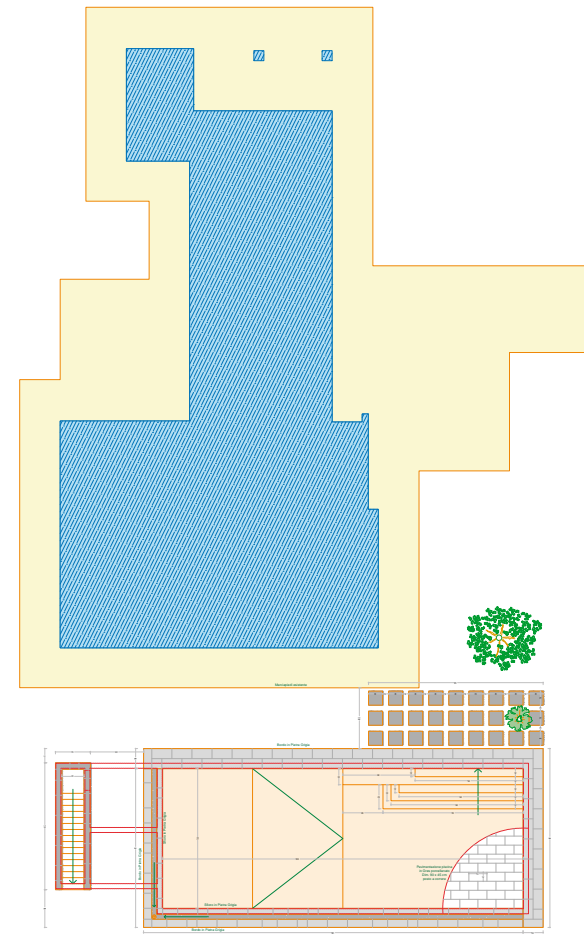
SYSTEM: WATERFALL INFINITY EDGE

INTERNAL LINING: TRAVERTINE



Deep blue

SANT'EGIDIO. Nestled in the hills of Umbria, this pool embellishes a beautiful garden that overlooks a breath-taking landscape. The materials, shapes and technological solutions of this pool are perfectly integrated into the environment to provide moments of well-being and relaxation. The pool features a double 40 m³/h filtering system and an AFM glass-based filter bed. The two Speck Badu Profi Eco Vs pumps with permanent magnet motors allow for different speeds, reduce energy consumption and, at the same time, control a smooth flow of water out of the jets. Using stone lining in the pool requires careful monitoring of the water quality. As far as oxidation is concerned, this pool is equipped with an automatic electrolysis and pH system with a static mixer for the cavitation of water -ZPM- used for flocculation and coagulation, mechanical disinfection and as a barrier against bacteria.





SANT'EGIDIO - PERUGIA - UMBRIA

CONTRACTOR: INDALO PISCINE SRL

DESIGNER AND WORKS MANAGER: Livio Farina, Architect

MUNICIPALITY: PERUGIA

POOL STRUCTURE: REINFORCED CONCRETE

SHAPE: RECTANGULAR

AREA: 126 m²

DIMENSIONS: 18 x 7 m

DEPTH: 1.20 - 1,70 m

FILTRATION SYSTEM: double - AFM series - 20 m³/h - filter bed



DISINFECTION: pH SALT SYSTEM

SYSTEM: WATERFALL INFINITY EDGE

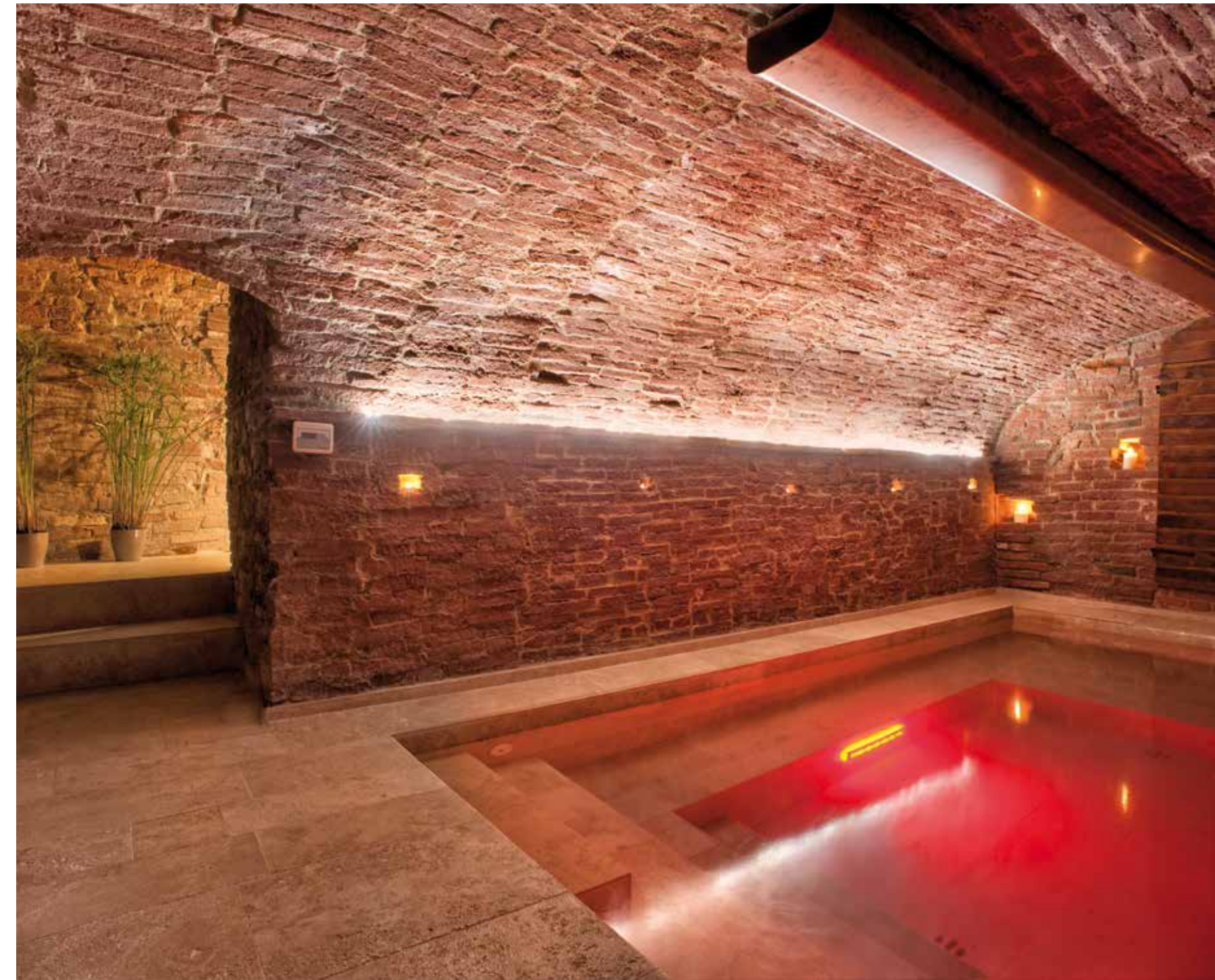
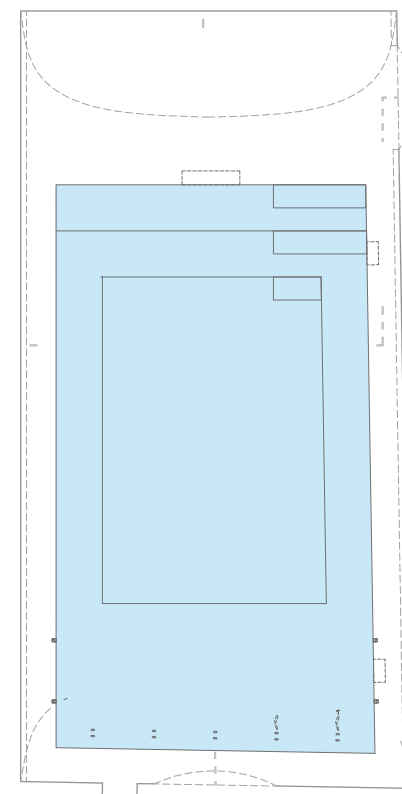
INTERNAL LINING: PIETRA BASALTINA

Noble atmospheres

SAN MINIATO. True well-being experiences in a pool built inside an early 19th-century aristocratic palace that surrounds a small square in the small Tuscan village of San Miniato.

The grounds of this aristocratic palace, accessed directly from a flat, house the former cellar, which is characterised by a simple barrel vault made of cotto tiles. This is the setting of the pool, whose design is inspired by the springs and wells that were and still are in the grounds of the buildings. We decided to use travertine for the internal lining of the pool, for the flooring of the small solarium and for the other external parts, thus using an elegant material that is in complete harmony with the aesthetics and history of the surrounding setting made of cotto tiles.

This rectangular pool is primarily meant for well-being. There are four hydromassage points inside with a large seat that allows you to extend your legs and enjoy the pool heated to 34°C by a heat pump. With regard to disinfection, we opted for a hydrolysis-based system that works with magnesium and potassium salts to thermalise the water and use the therapeutic benefits of the two minerals, regenerating body and mind.



A special treatment has also been applied to the air, which is dehumidified to ensure optimal quality at all times, allowing for a pleasant outdoor temperature while preserving the precious cotto artefacts that make up the entire vault.



The reinforced concrete structure has an 8 m³/h filtration system with an AFM glass-based filter bed inside, with the Speck 6 m³/h three-phase pump controlling the smooth flow of water out of the jets. Using travertine lining in the pool requires careful monitoring of the water quality. Lastly, an automatic hydrolysis-based system with 1 g/l of magnesium and potassium salt and an automatic pH control ensures oxidation control. Lighting is provided by a rectangular RGB LED spotlight.





SAN MINIATO - PISA - TUSCANY

CONTRACTOR: INDALO PISCINE SRL

DESIGNER AND WORKS MANAGER: Gabriele Evangelisti, Architect


MUNICIPALITY: SAN MINIATO (PI)

SHAPE: RECTANGULAR

AREA: 12,95 m²

DIMENSIONS: 4,87 x 2.66 m

DEPTH: 0,80 m

FILTRATION SYSTEM: single - HFS series 8 m³/h - filter bed 

DISINFECTION: pH SALT SYSTEM

SYSTEM: SKIMMER

INTERNAL LINING: BECAGLI TRAVERTINE

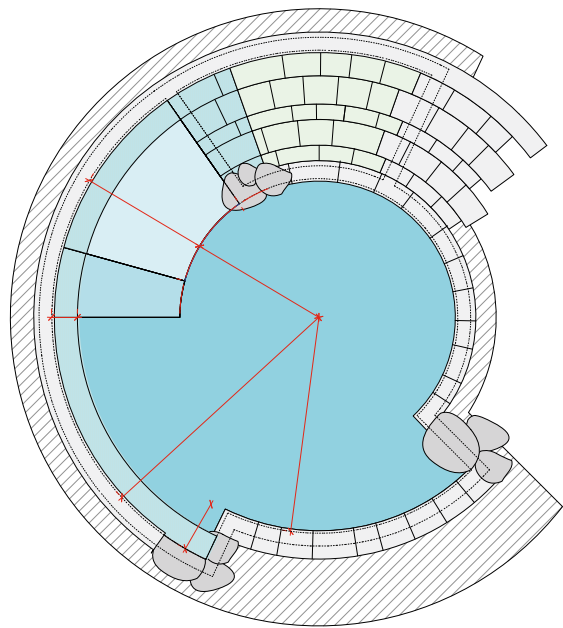


Best indoor pool award

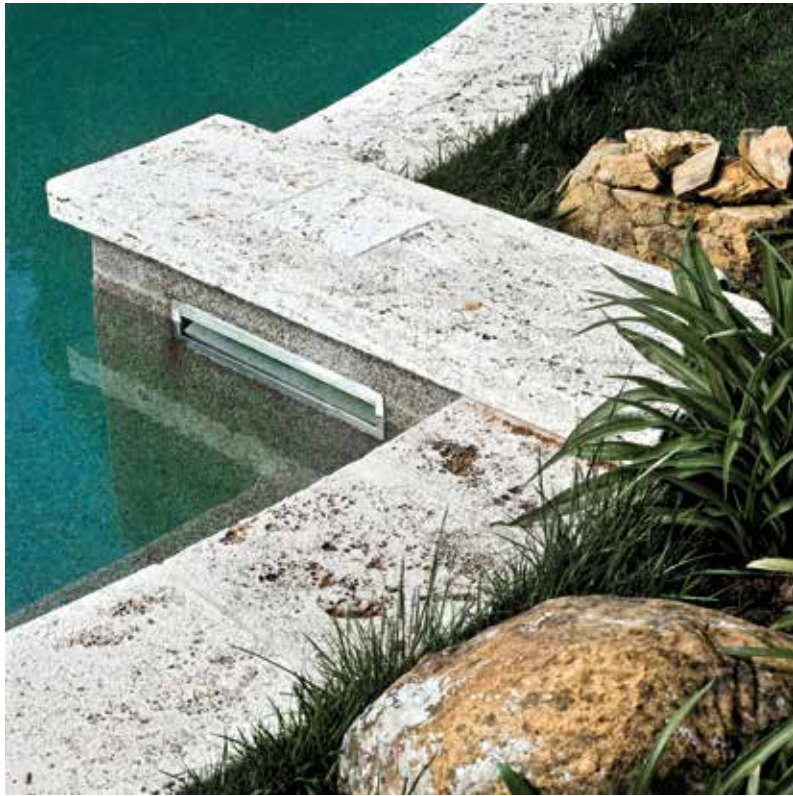
Perfect shapes


VAL D'AMBRA. Distinctive geometric shapes use and enhance the space available in this pool. The natural location was limited and offered few possibilities in terms of extension, therefore we decided to design and build concentric circles to create the illusion of a larger space.

A further insight is the interplay of full and empty spaces which makes the pool an ever-changing space based on the perception from different points of view, thus creating a more dynamic shape. The gravel and resin internal lining suited the distinctive shape of the pool and was a better alternative to the traditional stone lining, while a counter-current system allows the pool to be used for swimming as well.







VAL D'AMBRA - TUSCANY
CONTRACTOR: EDIL B.F. SNC
DESIGNER AND WORKS MANAGER: CITERA STUDIO - Christina Kammereck, Architect
MUNICIPALITY: PERGINE VALDARNO (AR)
SHAPE: ROUND
AREA: 50 m²
DIMENSIONS: 8 m DIAMETER
DEPTH: 1,50 m
FILTRATION SYSTEM: single - HFS 720 series - 20 m³/h filter bed 
DISINFECTION: pH SALT SYSTEM
SYSTEM: SKIMMER
INTERNAL LINING: NATURAL STONE SANDY BEACH COLOUR
EDGES AND FLOORING: BECAGLI TYPE TRAVERTINE

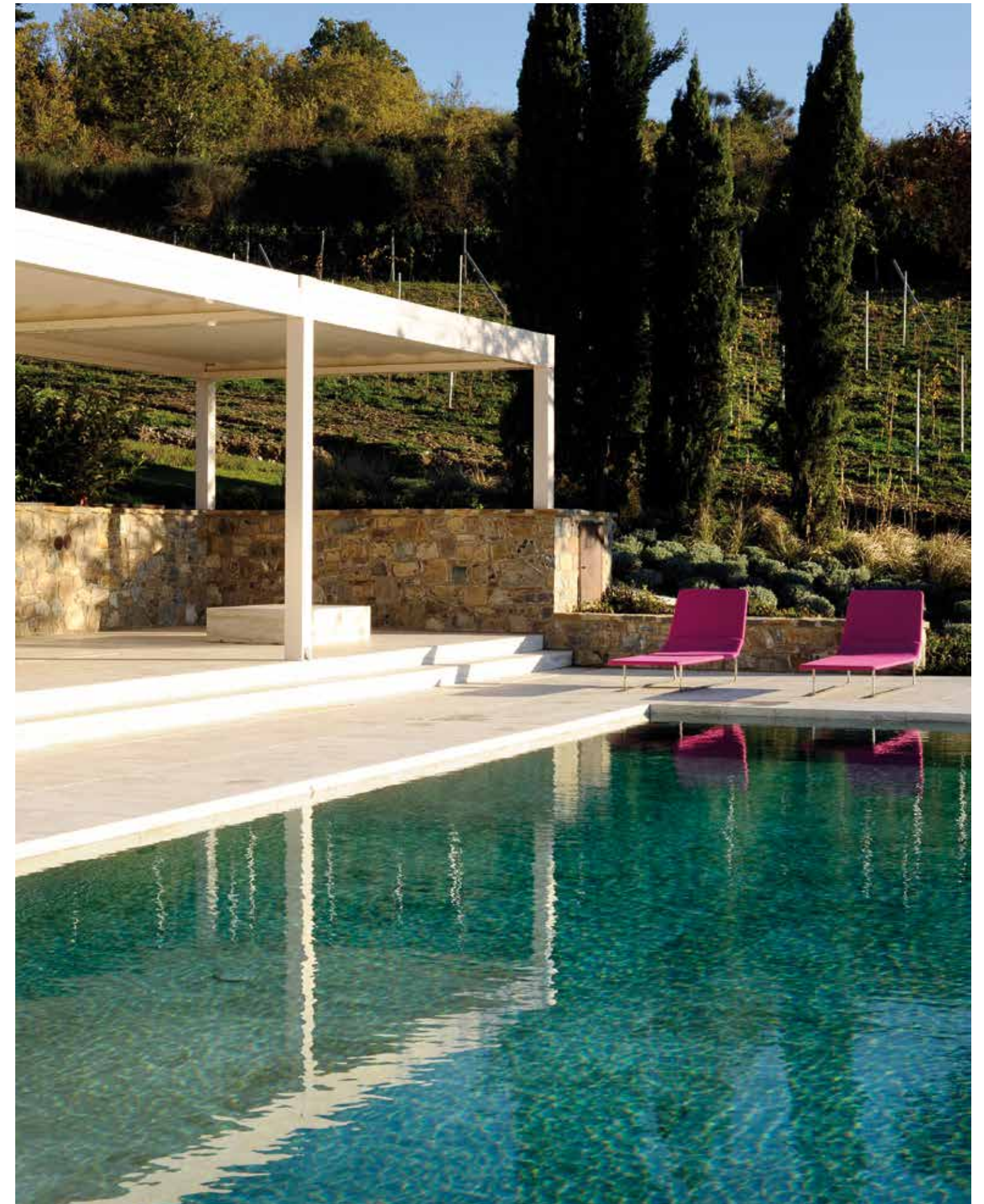
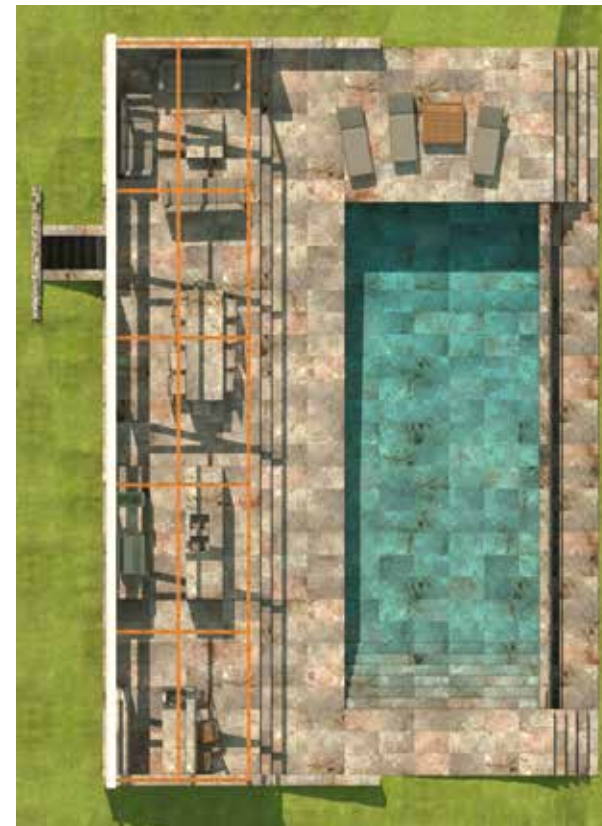


Emerald green

SAN CASCIANO DEI BAGNI. The marvellous landscape set in the Tuscan village of San Casciano dei Bagni houses a pool with rational and simple lines that overlooks the gentle slopes of Val d'Orcia. The purity of the shape also reflects the decision to use a single material for the internal lining and for the flooring of the large surrounding solarium, partly covered by a white iron-framed pergola which can be accessed by two steps running along the entire length of the covered area.

The rectangular pool is embellished by a waterfall on one of its large sides, facing the landscape, thus creating an impressive infinity edge effect. The project was inspired by the natural thermal baths of the area and led to the choice of a high quality material to build the entire system with: the "Becagli" travertine of Rapolano. This Tuscan marble, thanks to its extremely wide range of colours from beige, ivory and hazelnut, to golden shades at dusk, gives the water a wonderful emerald green colour and an incredibly natural effect. The same marble has been produced in different finishes for aesthetic and functional reasons: the outer wall of the infinity edge is ribbed and hand-finished to provide an extremely textured and natural effect, creating an irregular and vibrant waterfall reminiscent of the gentle sound of water flowing over cobblestone. The travertine in the internal flooring was stuccoed and brushed for easy cleaning, while the travertine in the external flooring was sandblasted, brushed and not stuccoed to make the surface of the material softer and more pleasant to the touch. The 6x12 m pool, with a depth varying from 130 to 180 cm, can be accessed via a few steps along the short side.

Lastly, the structure is made of reinforced concrete with pile foundations and a 20 cm cellular glass layer with a type of insulation that allows the temperature of the accumulated water to be maintained during the day without having to use a cover.





The pool is equipped with a filtering system with an AFM glass-based filter bed inside, while the pump controls the smooth flow of water out of the jets. Using travertine lining in the pool requires careful monitoring of the water quality. Our choice for pool oxidation consisted in an automatic electrolysis and pH-based system with a static mixer for the cavitation of water. The lighting is provided by six warm LED spotlights that illuminate the pool evenly.

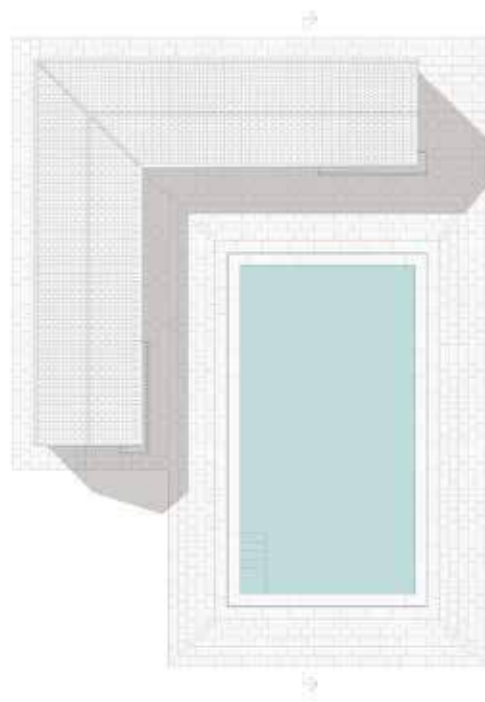
SAN CASCIAO DEI BAGNI - SIENA - TTSCANY
CONTRACTOR: INDALO PISCINE SRL
DESIGNER AND WORKS MANAGER: Alessandro Giulianelli Studio
MUNICIPALITY: SAN CASCIAO DEI BAGNI (SI)
SHAPE: RECTANGULAR
AREA: 75 m²
DIMENSIONS: 13,50 x 5,75 m
DEPTH: 1,30 - 1,80 m
FILTRATION SYSTEM: single - HFS series - 40 m³/h filter bed
DISINFECTION: pH SALT SYSTEM
SYSTEM: WATERFALL INFINITY EDGE
INTERNAL LINING: BECAGLI TRAVERTINE





Eaven on earth

CORBARA. A large portico houses a pool seamlessly nestled in a bucolic natural landscape among cypresses and olive groves. The pool has become the central courtyard of a small complex surrounded by greenery, and was designed on an old existing pool, whose large pietra serena edges have been replaced with a coplanar infinity edge, hidden and only revealed by a cut running along each side. This further expands the already large dimensions of 8x15 m. The use of the same grey stone for the edge and the flooring, moreover, provides the illusion of spatial and material continuity, creating a real fusion between water and stone, between reflected sky and earth.

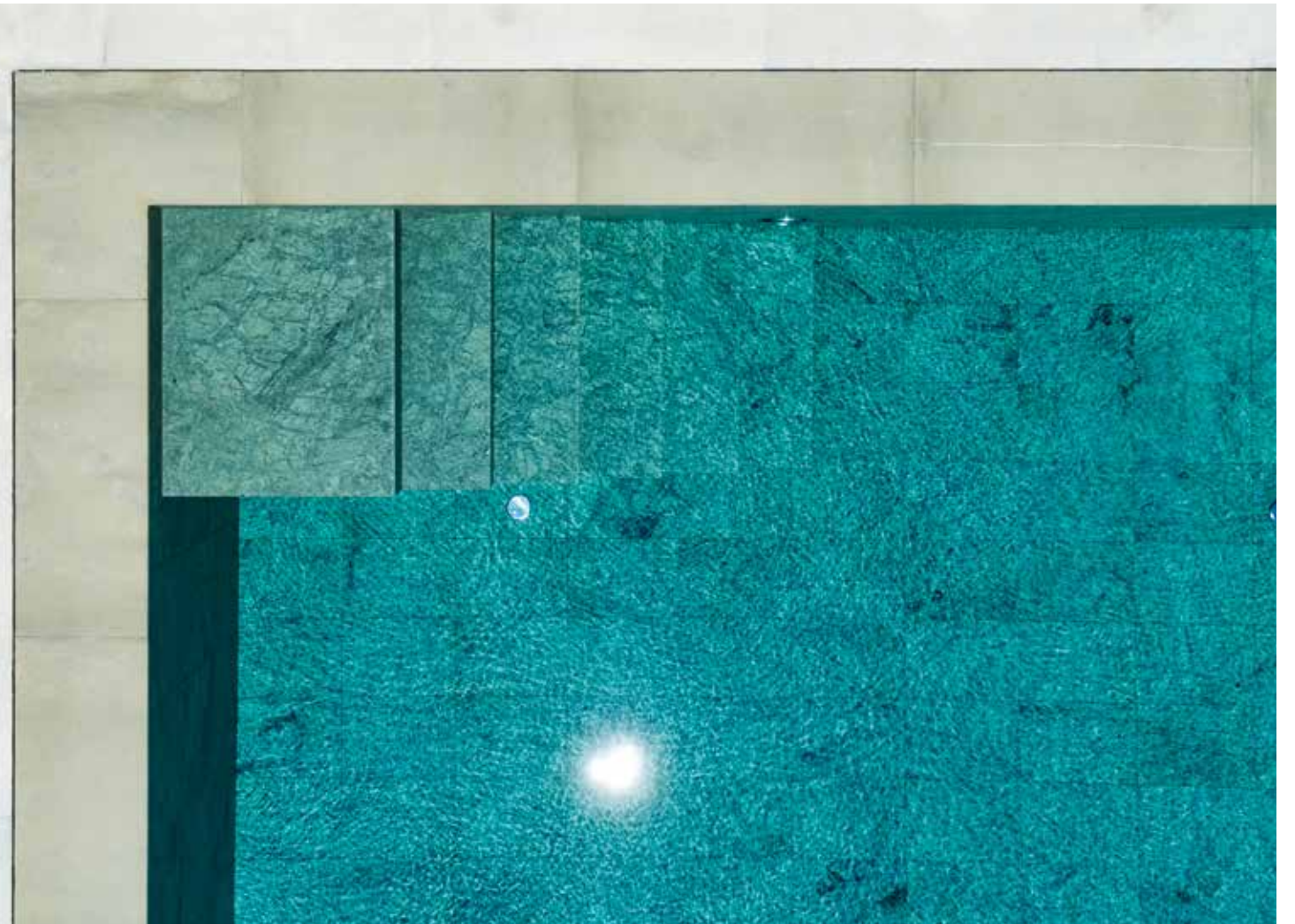





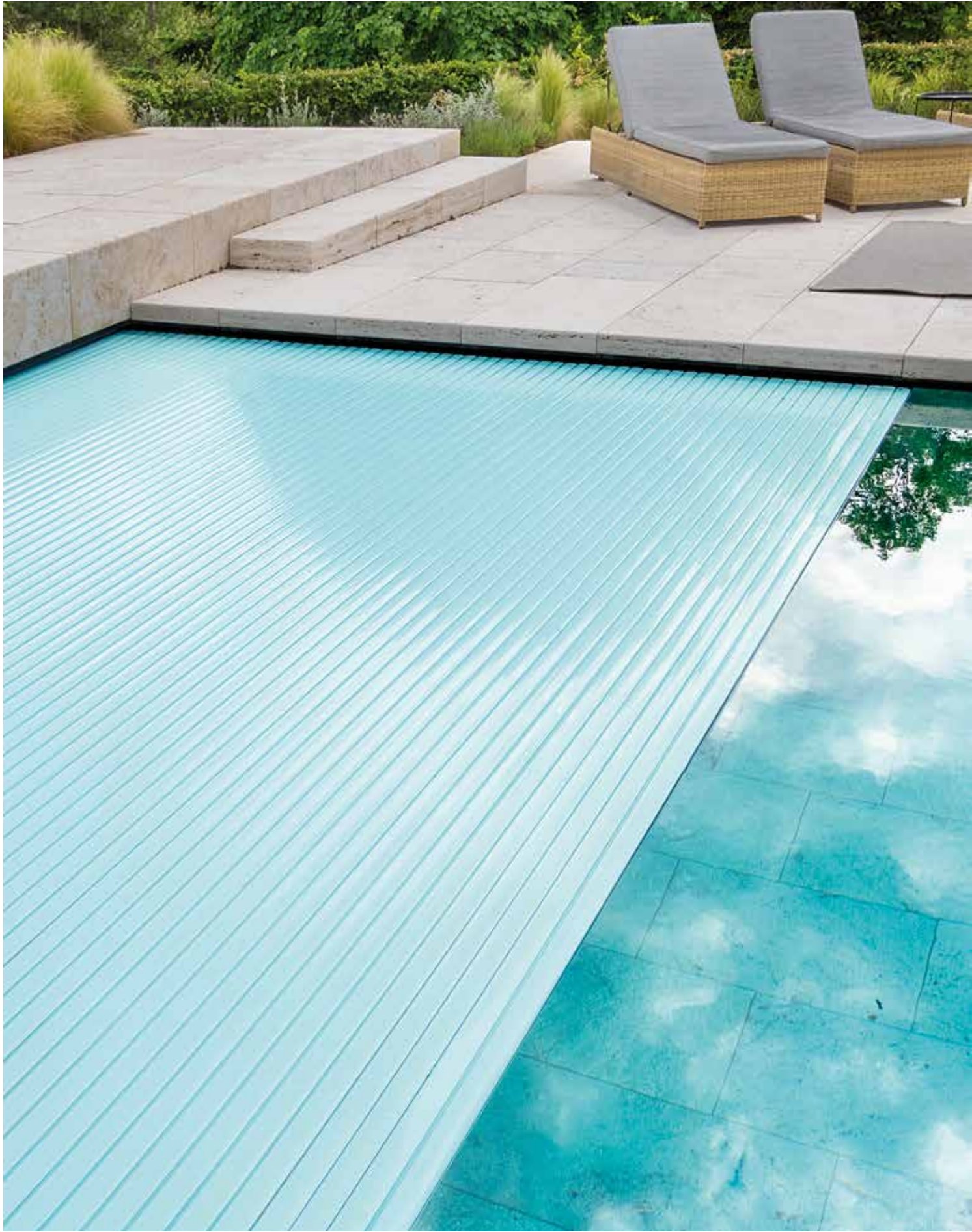


The flooring around the pool was purposely designed to be very wide to emphasise the illusion of interpenetration between the different elements and to recreate the centrality of the pool in the courtyard. The original depth has been reduced to 2 m in the highest part and to 1.55 m in the lowest part, with intense green stone lining the whole pool to give the water an emerald shade that blends in well with the landscape around the property.





CORBARA - TERNI - UMBRIA
CONTRACTOR: EDIL PARRETTI
DESIGNER AND WORKS MANAGER: Alessandro Giulianelli Studio
MUNICIPALITY: CORBARA (TR)
SHAPE: RECTANGULAR
AREA: 105 m²
DIMENSIONS: 15 x 7 m
DEPTH: 1,30 - 2 m
FILTRATION SYSTEM: double - series HSF 840 - 60 m³/h with energy-saving pumps - filter bed 
DISINFECTION: pH SALT SYSTEM
SYSTEM: INFINITY EDGE
INTERNAL LINING: GUATEMALA GREEN







STIA - AREZZO - TUSCANY

CONTRACTOR: SEAP SNC DI RICCI & C.

DESIGNER AND WORKS MANAGER: Citera Studio


MUNICIPALITY: PRATOVECCHIO STIA (AR)

SHAPE: RECTANGULAR

AREA: 79,20 m²

DIMENSIONS: 18 x 4,40 m

DEPTH: 1,42 - 1,80 m

FILTRATION SYSTEM: single - HFS 960 series 40 m³/h - filter bed 

DISINFECTION: Magnesium pH SALT SYSTEM

SYSTEM: WATERFALL INFINITY EDGE

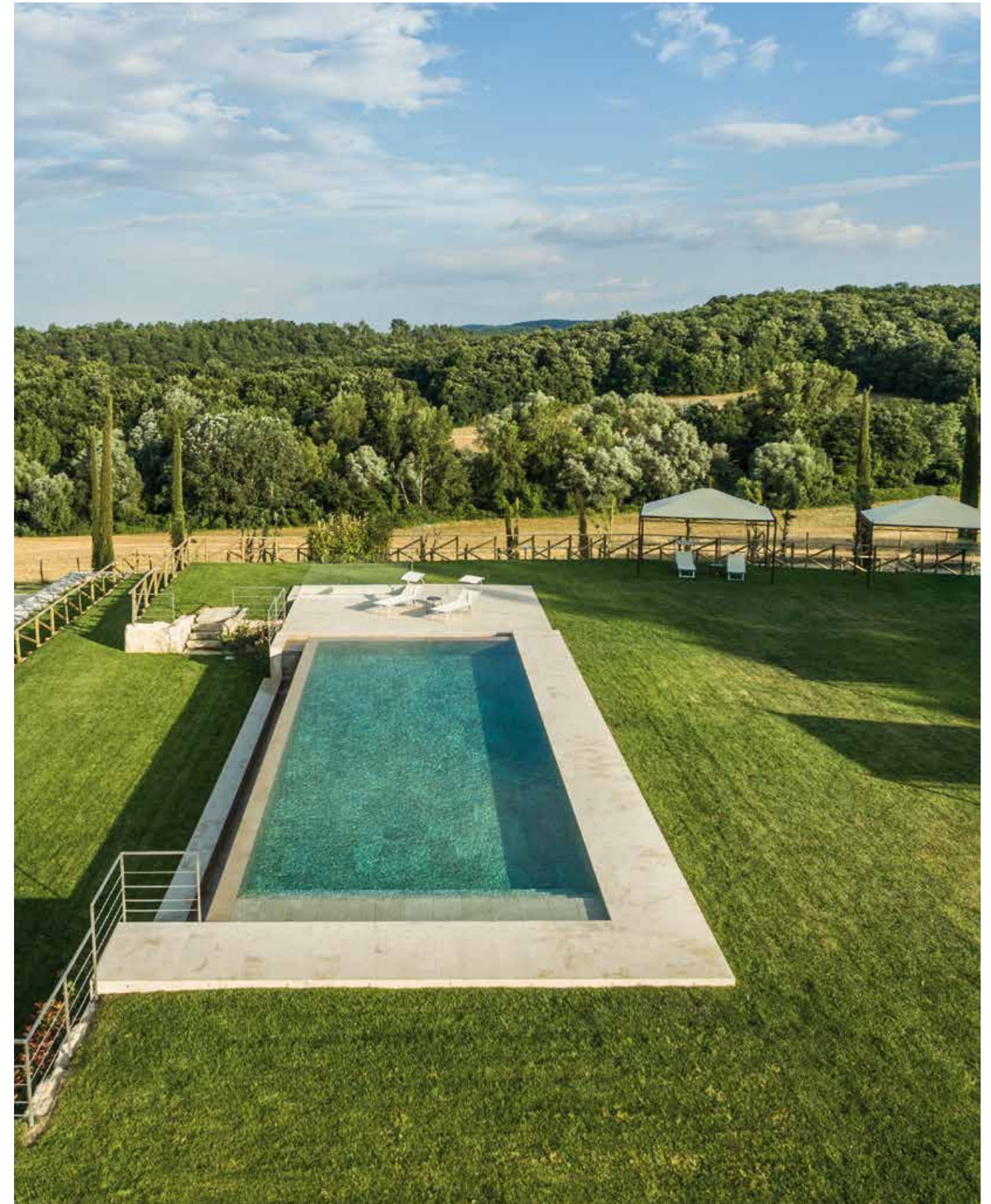
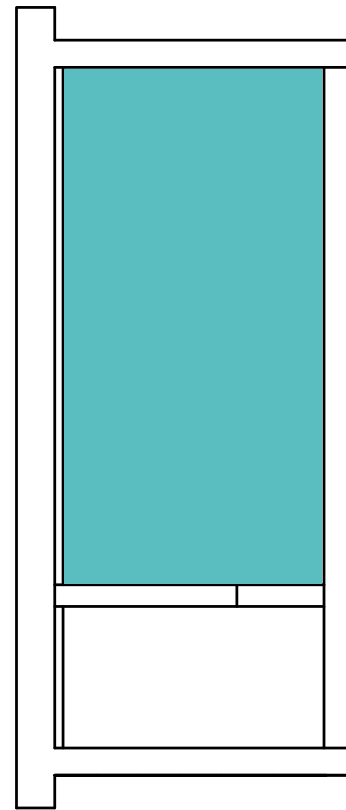
STRUCTURE: REINFORCED CONCRETE

INTERNAL LINING: ONLY BRUSHED NATURAL
STONE OF INDIAN ORIGIN, GREEN SHADE CALLED
GUATEMALAN GREEN

Olive trees and vineyards

TREQUANDA. A typical mid-19th century Tuscan farmhouse in the heart of the Siena hills. This is “Il Giuncheto”, a farmhouse now used as Bed & Breakfast following restoration work carried out respecting its original identity, with local and traditional materials. The farmhouse is surrounded by an extensive green land divided into garden, olive grove and vineyard.

In this context, the area facing south-east houses a pool that has a modern structure but the characteristic appearance of a natural pond. The pool is rectangular and runs parallel to the short side of the farmhouse, with an infinite edge that allows for an uninterrupted view of the Valdichiana hills.





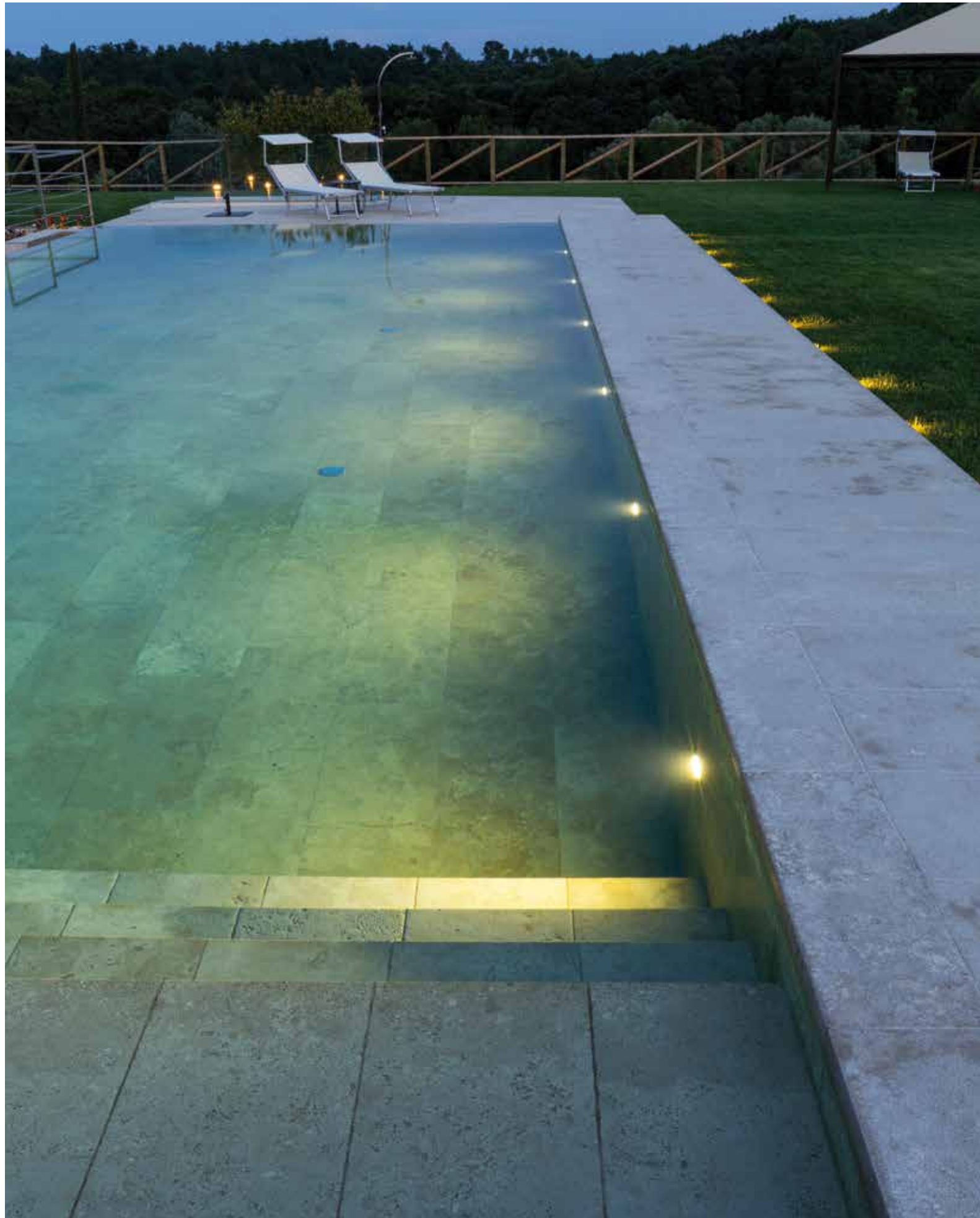
It is finished with fine local travertine, polished and brushed for the internal lining, and with a sandblasted finish for the outer perimeter band; the concrete structure is insulated with cellular glass material to ensure good drainage and excellent thermal insulation.



The use of local materials, the large surrounding green area and the inclusion of the structure in total respect of the orography of the soil without altering its natural shape make this pool perfectly compatible with the high landscape values of the location.







TREQUANDA - SIENA - TUSCANY

CONTRACTOR: INDALO PISCINE SRL

DESIGNER AND WORKS MANAGER: Rosalia D'Apice, Architect - Nicola Guazzi, Surveyor

MUNICIPALITY: TREQUANDA (SI)

SHAPE: RECTANGULAR

AREA: 90 m²

DIMENSIONS: 15 x 6 m

DEPTH: 1,40 m

FILTRATION SYSTEM: double - DCH 740 series - 35 m³/h - filter bed



DISINFECTION: pH SALT SYSTEM

SYSTEM: WATERFALL INFINITY EDGE

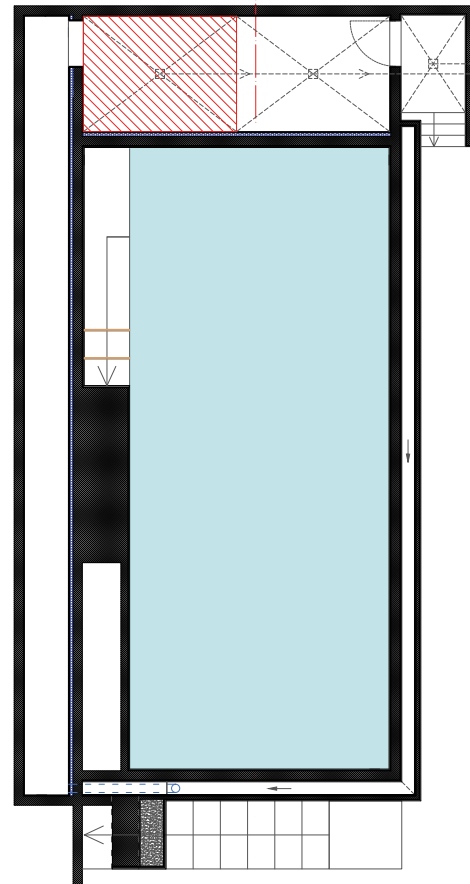
INTERNAL LINING: TRAVERTINE





Fresh and salt water

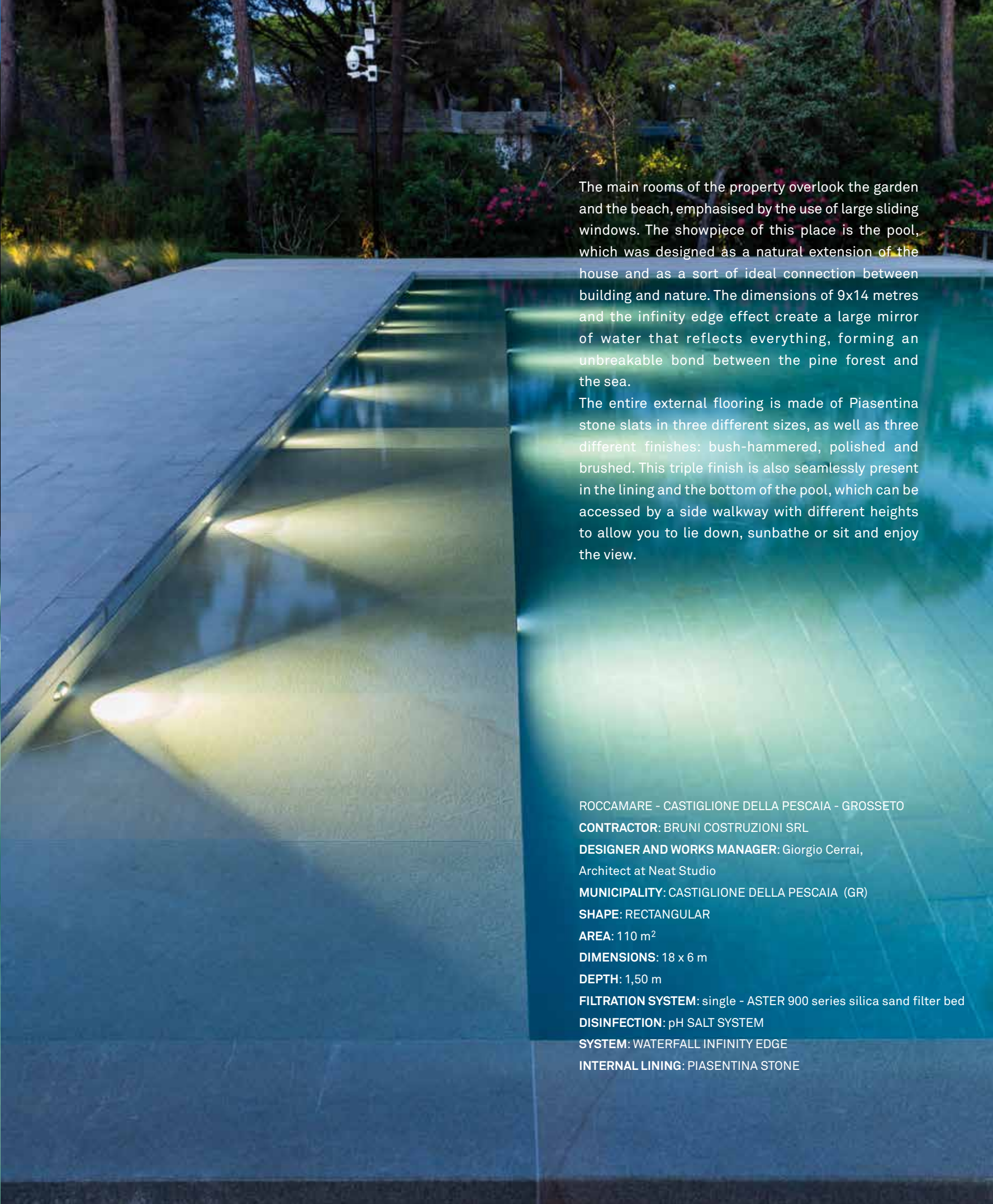
ROCCAMARE. A place for relaxing and for the holidays, with the privilege of being able to live in close contact with the nature of the Tuscan coast. Roccamare is a complex created in the early 1960s with the aim of becoming a “slice of paradise” that would symbolically open up to dialogue with the sea and the surrounding pine forest: hence the creation of typical Mediterranean architecture where space and outside world become one and where the choice of materials, colours and finishes is inspired by the clichés of the mid-20th century.











The main rooms of the property overlook the garden and the beach, emphasised by the use of large sliding windows. The showpiece of this place is the pool, which was designed as a natural extension of the house and as a sort of ideal connection between building and nature. The dimensions of 9x14 metres and the infinity edge effect create a large mirror of water that reflects everything, forming an unbreakable bond between the pine forest and the sea.

The entire external flooring is made of Piasentina stone slats in three different sizes, as well as three different finishes: bush-hammered, polished and brushed. This triple finish is also seamlessly present in the lining and the bottom of the pool, which can be accessed by a side walkway with different heights to allow you to lie down, sunbathe or sit and enjoy the view.

ROCCAMARE - CASTIGLIONE DELLA PESCAIA - GROSSETO

CONTRACTOR: BRUNI COSTRUZIONI SRL

DESIGNER AND WORKS MANAGER: Giorgio Cerrai,
Architect at Neat Studio

MUNICIPALITY: CASTIGLIONE DELLA PESCAIA (GR)

SHAPE: RECTANGULAR

AREA: 110 m²

DIMENSIONS: 18 x 6 m

DEPTH: 1,50 m

FILTRATION SYSTEM: single - ASTER 900 series silica sand filter bed

DISINFECTION: pH SALT SYSTEM

SYSTEM: WATERFALL INFINITY EDGE

INTERNAL LINING: PIASENTINA STONE





tel. +39 0577 622 030

info@indalopiscine.com

www.indalopiscine.com

